

# BALGANESH ENTERPRISES

INDUSTRIAL SUPPLIER

LIGHTING & SWITCHGEARS.

# Schneider Electric

# SIEMENS



FUSES



RELAYS



MCBs



PROTECTION



PUSH BUTTON & INDICATORS



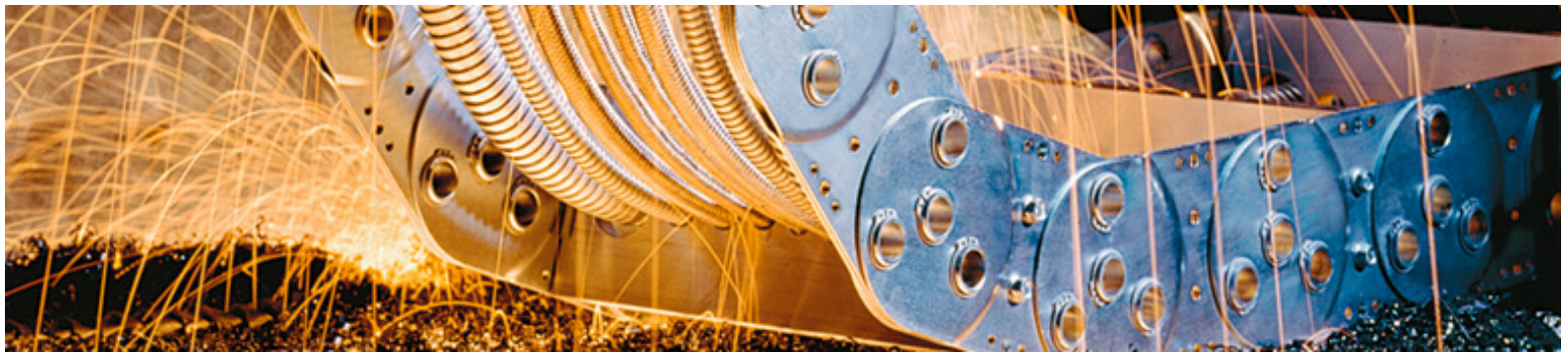
CONTROLS & SWITCHES



AUTOMATION PRODUCTS

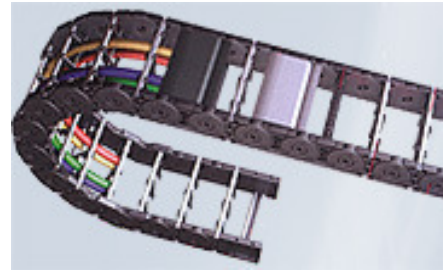
DRIVES

PANELS



**BASIC-LINE / BASIC-LINE PLUS**

Solid plastic cable carriers with fixed chain widths



**VARIO-LINE**

Cable carriers with variable chain widths



**TUBE SERIES**

Covered Cable Carriers



**ROBOTRAX - 3D-LINE**

Cable carriers for 3D movements



### **STEEL-LINE**

Steel cable carriers – solutions for extreme applications



### **TOTALTRAX**

Ready-to-assemble cable carrier system

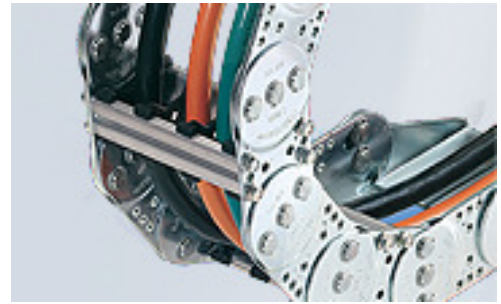
## **STEEL-LINE**

Steel cable carriers – solutions for extreme applications



### **LS/LSX Series**

Cost-effective steel chains with light design



### **S/SX Series**

Extremely robust and stable steel chains



### **CONDUFLEX**

Closed designer cable carrier

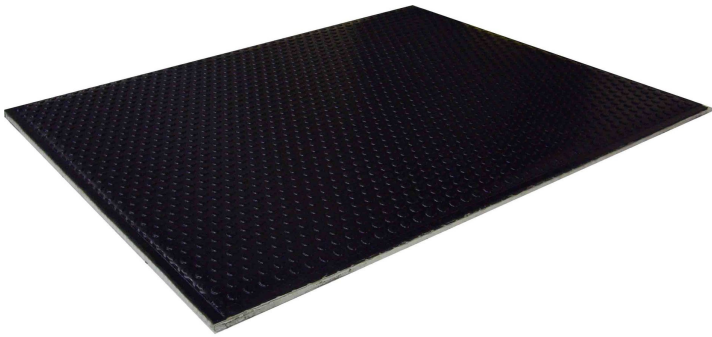


### **MOBIFLEX**

Enclosed cable carrier with flexible metal helical tube

# OMRON

## SAFETY DEVICES



*New Safety Mat That Is Easy to Install and Maintain. Keep Area Safety by Detecting Worker's Presence.*

- Simple connection allows multiple mats to be joined together.
- A wide variety of mat sizes are available.

## Product Lineup - Safety Solutions



**Safety Sensors**



**Safety Door Switches**



**Safety Limit Switches**



**Presence Detection Sensors**



**Emergency Stop Switches**



**Application Controllers**



**Relays with Forcibly Guided Contacts**



**Enabling Switches**



**DeviceNet Safety System**

## Product Lineup - Industrial Components



**Temperature Controllers**



**Timers**



**Counters**



**Digital Panel Meters**



**Switching Power Supplies**



**Level/Monitoring Controllers**



**Switches**



**Relays**



**Others**

**Product Lineup - Automation Systems**



**Machine Automation  
Controllers**



**Programmable  
Controllers**



**Programmable  
Terminals**



**Motion Control**



**Industrial Network**



**IT/Software Products**

**Product Lineup - Automation Systems**



**Machine Automation  
Controllers**



**Programmable  
Controllers**



**Programmable  
Terminals**



**Motion Control**



**Industrial Network**



**IT/Software Products**

## Product Lineup - Sensing Solutions



**Photoelectric Sensors**



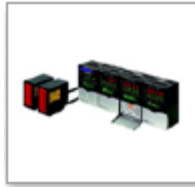
**Optical Fiber Sensors**



**Photomicrosensors**



**Vision Sensors**



**Smart Sensors**



**Displacement Sensors**



**Proximity Sensors**



**Rotary Encoders**



**Pressure Sensors**



**Safety/Area Sensors**



**Ultrasonic Sensors**



**Data Loggers**



**Ionizers/Clean Sensing Systems**



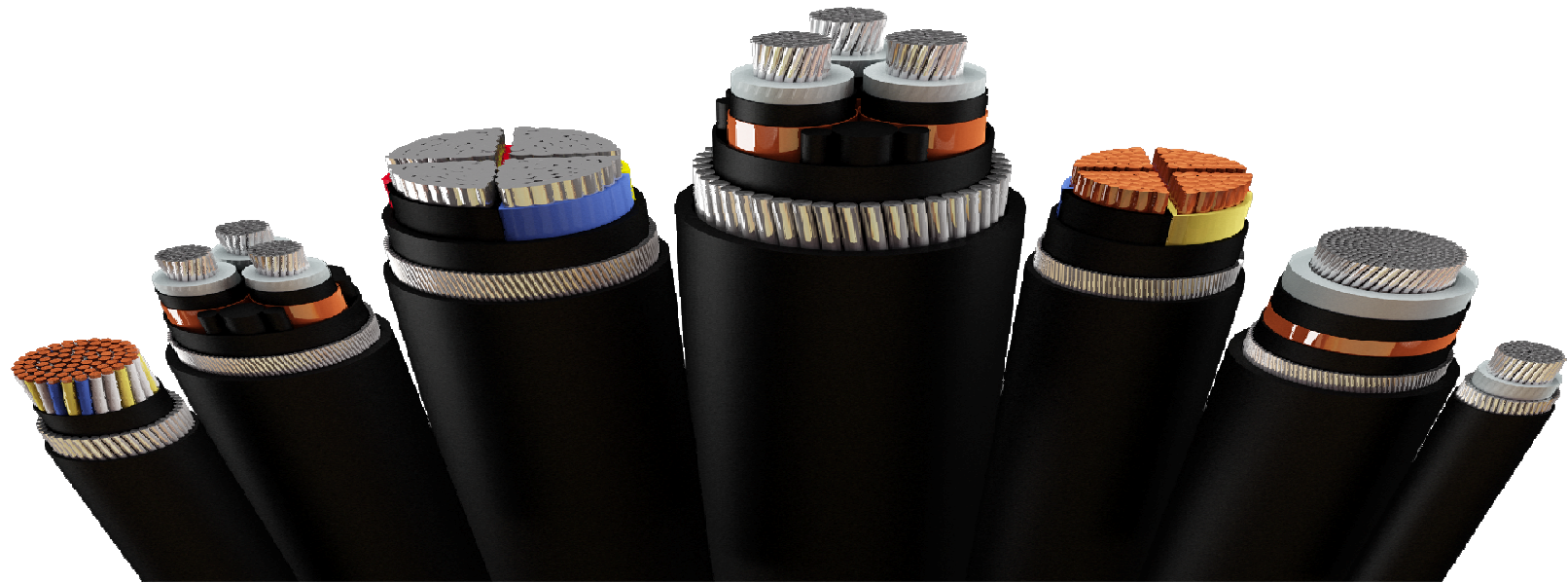
**UV Bonding Systems**



**Sensor I/O Connectors**



# CABLES & ACCESSORIES

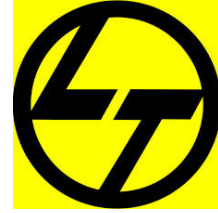


**KABELSCHLEPP**



**Schneider Electric**

**HIRSCHMANN**



**SIEMENS**



**HEIDENHAIN**

**FLUKE**

**Baumer**  
Passion for Sensors



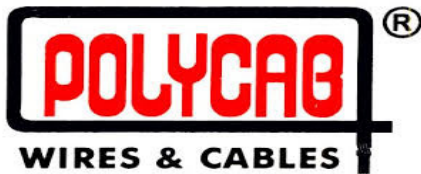
**Autonics**

Sensors & Controllers



**MITSUBISHI ELECTRIC**  
Changes for the Better

**Koyo**



**LAPP KABEL DANAHER**



**Honeywell**

**YOKOGAWA**



**BOSCH WIKAI**

**BALGANESH Enterprises**

NO 32 chakra manere Rajendra Prasad street vinayagapuram ambattur  
chennai-53 email: baalganeshenterprises@gmail.com Cell:9500748755